

These items must be worn even in hot weather. Ensure you have a lightweight t-shirt or similar to wear beneath the boiler suit. Eating and drinking is not permitted in the classrooms or workshops. Drinking water is available in the toilets, corridors and the cafeteria.

How will I be assessed?

To achieve the award you must successfully complete all four units. Assessment in this Course will be based on a range of practical workshop activities.

Each Unit will be supported by a National Assessment Bank item (NAB). The course will show on your final exam certificate as an Intermediate 2 award.

What can I do after this course?

This Course may provide candidates with opportunities to progress to:

- Other Pre-Vocational courses in Further Education Colleges
- Employment as an apprentice in the construction industry and associated SVQ work.

Who should I speak to about this course?

If you are interested in this course and want to find out more about it you should speak to your Guidance Teacher at school.

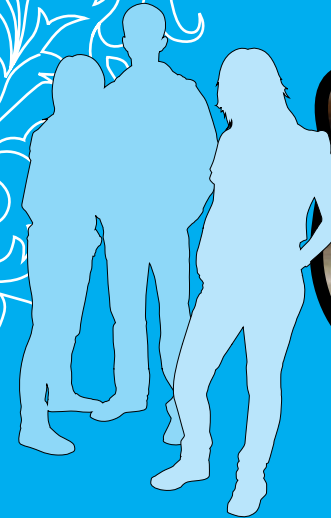
Time to choose?



ABERDEENCOLLEGE®

Aberdeen College School Links

Skills for Work Construction Crafts Intermediate 2



ABERDEENCOLLEGE®

Aberdeen College, Gallowgate Centre, Gallowgate, Aberdeen AB25 1BN
Tel: 01224 612000 • Minicom: 01224 612163 • Fax: 01224 612001
Email: enquiry@abcol.ac.uk • Web: www.abcol.ac.uk

Information for Pupils and Parents

Your school has joined with Aberdeen College to offer you the opportunity to undertake a vocational qualification as part of your school studies. This information leaflet is designed to answer your questions and explain a bit about the course you will be taking.

What is it?

Skills for Work Construction Crafts is a new National Course available in various colleges throughout Scotland. This course is aimed at fifth year pupils who are interested in working in the construction industry and who have, preferably, completed the Intermediate 1 course. It involves a number of one credit units, longer and more complex than those in Intermediate 1.

By completing this Course you will be developing important skills that will allow you to develop further by either undertaking additional training and qualifications on leaving school, or entering suitable employment through an apprenticeship.

This Course will allow you to sample a range of construction disciplines in a meaningful way, which will result in you gaining a recognised SQA National Qualification.

What will I learn?

During this Course you will:

- Develop technical knowledge, skills and understanding associated with a range of craft skills in construction
- Develop an awareness of Health and Safety issues in construction
- Be encouraged to develop a positive attitude to environmental issues
- Develop and learn to apply practical, technical and communication skills as a basis for future learning and progression
- Develop employment skills which can assist with finding a job in the future.

How will I be taught?

You will be taught by means of practical based activities in the workshop and classroom work. You will be taught in classes held at Aberdeen College one full day per week.

You will be expected to demonstrate:

- Good time keeping skills
- A willingness to learn
- A knowledge of appropriate dress, in particular Personal Protective Equipment (PPE)
- Planning and preparation skills
- An ability to establish and maintain good working relationships with others
- Problem solving skills
- An ability to review and identify how your skills are developing.

What will I study?

The course is made up of three core units:

- Employability Skills
- One Brick Walling
- Bench Joinery

plus a minimum of another one (chosen by the college), either

- Plumbing of Sanitary Appliances or
- Decorative Painting Techniques.

What do I need?

For all construction and engineering courses it is necessary to wear Personal Protective Equipment (PPE). You are not allowed into the workshops without PPE and will be marked absent if you arrive without it.

Personal Protective Equipment required includes:

- Safety Footwear, i.e. boots or shoes with steel toe caps
- Safety Glasses
- A Boiler Suit.