

### **How will I be assessed?**

To achieve the Course award you must successfully complete the 3 mandatory units and one optional unit. Assessment will be based on test and case studies along with project work and a folio.

Each Unit will be supported by a NAB (National Assessment Bank item).

This course will show on your final Exam Certificate as an Intermediate 1 award.

### **What can I do after this course?**

Join one of our Introductory level courses within Healthcare.

These include: NC Child, Health & Social care, or Introduction to Nursing.

### **Who should I speak to about this course?**

If you are interested in this course and want to find out more about it you should speak to your Guidance Teacher at school.

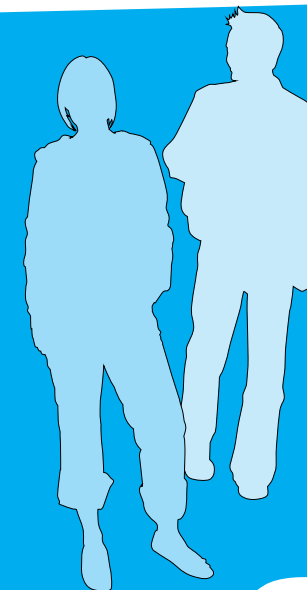
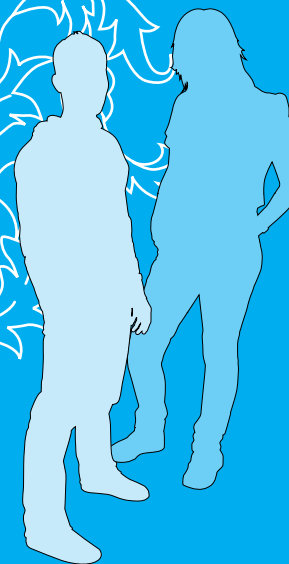
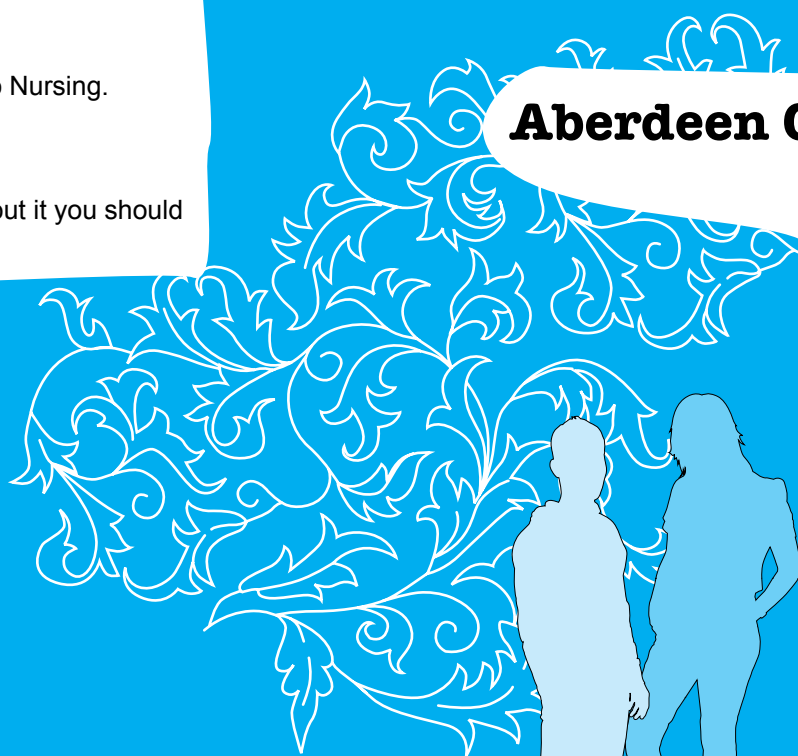
# Time to choose?



ABERDEENCOLLEGE®

## **Aberdeen College School Links**

**Skills for Work  
Health Sector  
Intermediate 1**



ABERDEENCOLLEGE®

Aberdeen College, Gallowgate Centre, Gallowgate, Aberdeen AB25 1BN

Tel: 01224 612000 • Minicom: 01224 612163 • Fax: 01224 612001

Email: [enquiry@abcol.ac.uk](mailto:enquiry@abcol.ac.uk) • Web: [www.abcol.ac.uk](http://www.abcol.ac.uk)

**Information for Pupils and Parents**

**Your school has joined with Aberdeen College to offer you the opportunity to undertake a vocational qualification as part of your school studies. This information leaflet is designed to answer your questions and explain a bit about the course you will be taking.**

### **What is it?**

The Health Sector is one of the largest employers in the country and provides employment opportunities through a varied range of disciplines. Although Primary & Secondary care within the NHS is one of the most common routes to employment, this course will allow pupils to investigate other areas such as Complementary Therapies, Life Science Industry, Retail Pharmaceutical Industry and Working in the Community and Voluntary Sectors.

Central to the course is developing the attitudes and skills necessary for effective work in a Healthcare environment.

### **What will I learn?**

During this course you will:

- Undertake a number of practical activities to develop knowledge and understanding of health sector environments
- Gain an insight into the range and diversity of careers within the health sector
- Learn about the basic structure and function of the main body systems
- Learn how to measure physiological changes in body function
- Learn how to work as part of a team to promote health
- Learn how to consider hazards and risks within the healthcare environment
- Develop knowledge and skills relating to infection control measures
- Consider biomedical products and their application in the health sector.

### **How will I be taught?**

You will be taught by means of practical based activities. Generally classes will last up to 2½ hours. You will study by means of individual research, group activities, practical activities, viewing videos and through course booklets provided by the College.

You will be expected to demonstrate:

- Good time keeping skills
- A willingness to learn
- Planning and preparation skills
- An ability to establish and maintain good working relationships with others
- Problem solving skills
- An ability to review and identify how your skills are developing.

### **What will I study?**

The course is made up of the following units:

- Health Sector: an Introduction
- Health Sector: Roles and Responsibilities
- Health Sector: Health Awareness
- Health Sector: Working Safely
- Health Sector: Life Sciences Industry.

### **What do I need?**

Whilst you are taking part in the course you will be required to always:

- Wear the appropriate clothing
- Be ready to start your class at the given time
- Adhere to the School Pupils Code of Commitment.

Mobile phones are not permitted in the classroom. Eating and drinking is not permitted in the classrooms. Drinking water is available from water dispensers in the corridors within the College buildings.